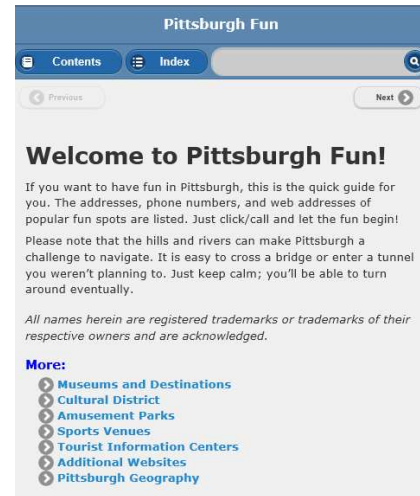
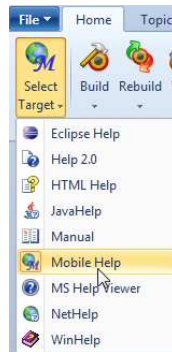


What's New in Doc-To-Help 2012

New Output for Mobile Devices

Doc-To-Help can now turn your content into web-based output especially designed for mobile devices. It uses two Web technologies — jQuery and jQuery Mobile —that make it browser- and device-independent.

Mobile Help is Section 508 compliant.



The Mobile Help target should work on all devices supported by jQuery Mobile. The full list of devices can be found at <http://jquerymobile.com/gbs/>

Three samples are included that demonstrate several uses for mobile output —one is a knowledgebase for a service team (“Brew Crew Answer Station”), one a tourism resource (“Pittsburgh Fun”), and Help for the fictional game “Peeved Penguins.”

Office 365 (SharePoint Online) Support

Our integration with SharePoint has been expanded so that you can manage content or publish output in Microsoft Office 365's SharePoint Online.

Prerequisites:

- .NET Framework 3.5.
- Windows Identity Foundation <http://www.microsoft.com/download/en/details.aspx?id=17331>

Supported operating systems:

Windows 7, Windows Server 2008 R2, Windows Server 2008 Service Pack 2, Windows Vista Service Pack 2, Windows Server 2003 Service Pack 2.



NetHelp 2.0 Enhancements:

Optimized Performance

NetHelp 2.0 loading time has been optimized.

Additionally, if an Index contains no keywords, the Index tab will be automatically hidden in NetHelp outputs.

Section 508 Compliance

NetHelp 2.0 is now Section 508 compliant. We have added keyboard shortcuts, screen reader compatibility, and more.

- Icons in the table of contents have text equivalents that indicate whether the item is a book or a topic.
- Popup links automatically become jump links to allow easier accessibility. Also, margin notes and glossary term links, which are normally popups, display in the main frame.
- Inline popup text is shown as inline (or expanding) text rather than appearing in a popup.
- When a user clicks a group or keyword link or a keyword in the index that has multiple destination topics, the destinations are shown in the main frame. By default, the heading of this page is “N Topics Found” where “N” is the number of topics associated with the group or keyword.
- The auto filter for keywords on the Index page is disabled. Keywords are filtered by pressing the ENTER key.
- When results on the Index or Search page are displayed the focus automatically is set to a label with the results, so the screen reader will read it automatically.
- When hidden text (from inline, dropdown, or collapsible sections) is displayed the focus is automatically set on the new text, so the screen reader will read it.

The following features are enabled, regardless of the Accessibility mode chosen:

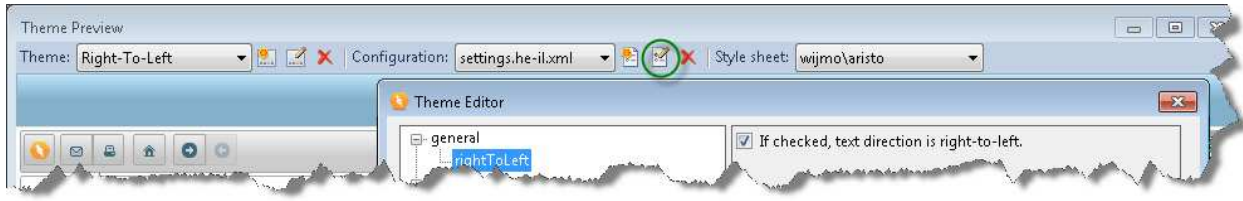
- All links and buttons in NetHelp 2.0 themes are accessible from the keyboard using the Tab key.
- The user can expand and collapse books in the table of contents using the Num +/- buttons.

The Theme Designer now includes additional options so that specific strings can be configured for accessibility.

NetHelp 2.0 Enhancements, continued:

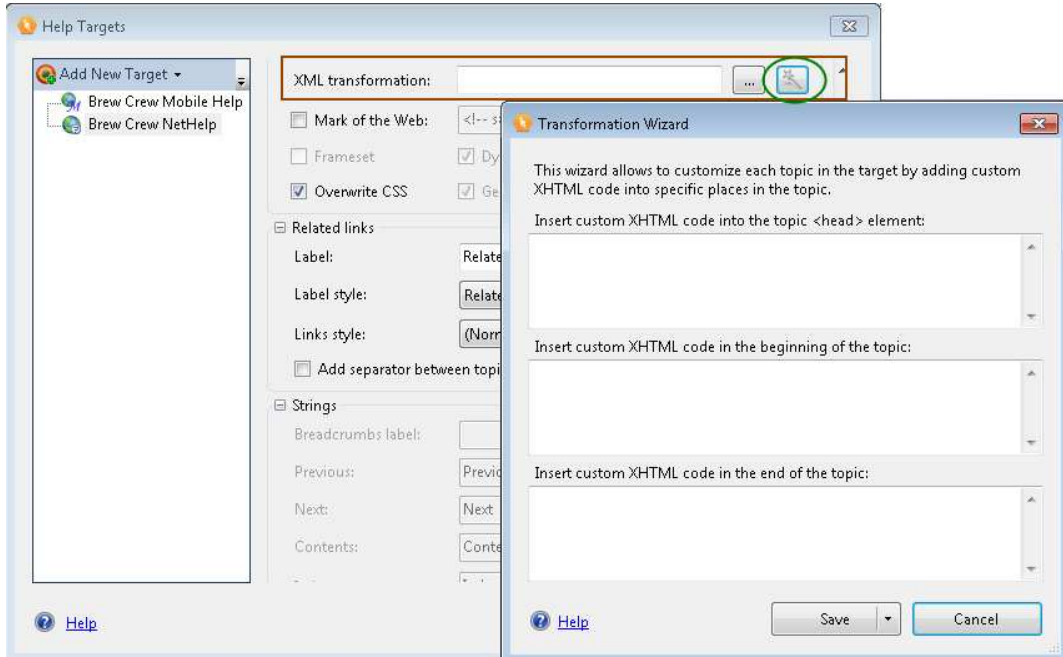
Support for Right-To-Left Languages

Right-To-Left languages are now supported in NetHelp 2.0. A new option will allow you to set the text direction, plus a new localization file (settings.he-il.xml) has been added for Hebrew localization.



Transformation Wizard

Using the Transformation Wizard, you can now easily insert boilerplate content or code into every Help topic, for example: headers, footers, or code needed for technology such as analytics.



Configuration files created by the wizard can be used in other Targets or projects.



New Eclipse Help Output

You can now create Help for the Eclipse development platform.

Eclipse and the Java Runtime Environment (JRE) must be installed to view Eclipse Help.

The Eclipse install path should be specified in Doc-To-Help using the **Options** dialog box (**Files** > Doc-To-Help **Options** button > **Eclipse** button).

Notes about the Eclipse Help target:

- The Eclipse Help target does not support opening topic links in secondary windows. Those topics will be displayed in the current window.
- The Target Theme only controls the topic frame in the Eclipse Help System because the other elements (TOC, index, etc.) are controlled by the Eclipse Help System scripts.

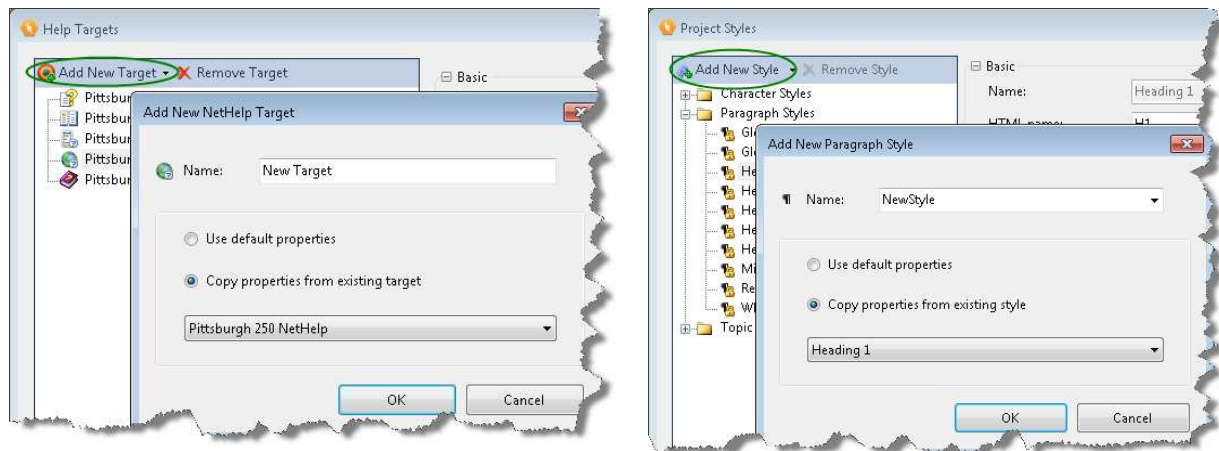
Build Enhancements

Previously, it was necessary to close all open Word documents before building a Doc-To-Help project. That is no longer a requirement, so you can continue to edit Word documents — even the source documents in your project — while Doc-To-Help builds. If you choose a source document that has been shared to SharePoint, it can only be edited locally and all automatic operations with the SharePoint server are disabled.

Copy Properties When Creating a New Target or New Style

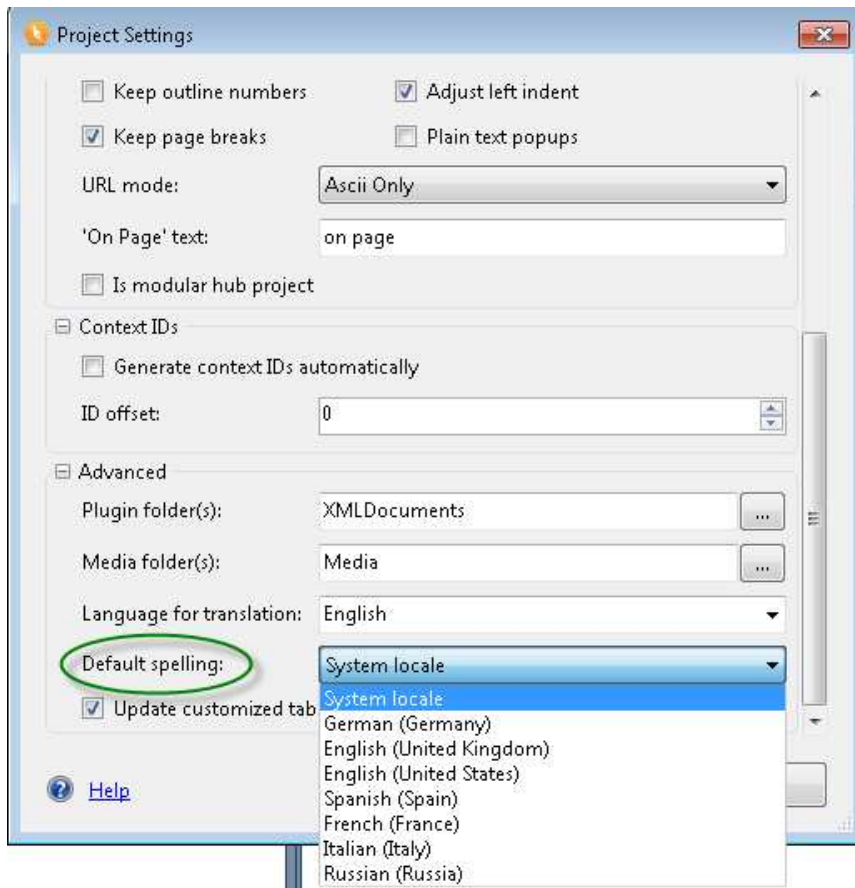
You can now copy the properties of an existing Target or Style when creating a new one.

The new options are available from the **Help Targets** and **Project Styles** dialog boxes.





New Spell-Checker Option



There is now a way to set the default language for the spell-checker for all project XHTML documents simultaneously.

This is set in the **Project Properties** dialog box (**Project** tab > **Project** ribbon group dialog box launcher) using the **Default Spelling** property. The default value, **System locale**, is taken from the **Control Panel** > **Region and Language** > **Administrative** > **Current language** setting for non-Unicode programs.

Please note that this setting will not override XHTML documents where the language for the spell-checker has already been defined using the **Editor** tab > **Spelling** button.